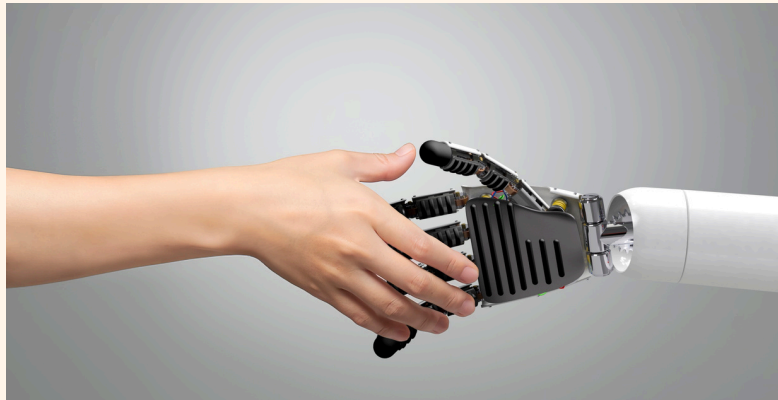


# YOUR SECURITY POWERED BY AI AND ROBOTICS



Agape-1 Technology Inc.

Security threats don't keep business hours. After-hours response times often lag, increasing risk—especially across wide outdoor areas. The A-1 Security Robot is engineered to provide around-the-clock support by extending coverage in outdoor environments, integrating seamlessly with existing security operations to enhance monitoring, deter unwanted activity, and enable faster responses to potential threats.



## Meet the A-1 Security Robot

A-1 is an autonomous, self-navigating security robot designed to patrol areas such as outdoor parking lots, campuses, retail centers, loading docks, health facilities, transportation hubs, and public spaces with minimal oversight.

Developed with reliability and adaptability in mind, A-1 delivers consistent performance across a variety of outdoor settings.



## Optimized for Outdoor Security

Incidents often unfold in seconds, long before human responders can intervene. Agape-1's Crime Detection and Deterrence System (CDDS) transforms the A-1 Security Robot into a proactive protector. By analyzing live data from cameras, microphones, LiDAR, and other sensors, the CDDS recognizes behaviors like loitering, unauthorized access, and escalating disputes in real time.

A-1's interactive deterrence capability can help mitigate trouble before it escalates. Instead of simply recording incidents, its visible and vocal presence makes intruders think twice to help prevent loitering, vandalism, and theft without relying solely on human guards.

While drone support is still in development, future aerial scouting could further enhance A-1's navigation and situational awareness. A drone may map ahead, spot obstacles, and provide overhead views to help the robot adjust its route and patrol more efficiently. Over time, coordinated ground and aerial coverage could improve visibility, speed response, and deliver stronger perimeter protection.



## Key Features:

- On-Site Data Collection: The A-1 Security Robot ships with multimodal sensors that analyze visual and audio data to identify potential security incidents in real time.
- Edge-Based Processing: Local edge computing enables rapid analysis and responses.
- Continuous Operation: Engineered for consistent patrols, the robot operates regardless of environmental conditions or human limitations.
- Neutral Interaction Presence: Designed as a non-emotional security tool to assist in maintaining order during routine patrols and monitored environments.
- Low-Light Monitoring: Equipped with specialized cameras, A-1 can conduct surveillance in low-light conditions.
- Modular Design for Specialized Tasks: Support add-on modules, such as robotic arms and specific operations.



When a threat is detected, the A-1 activates dynamic deterrence with police-style lights, voice warnings, and loudspeaker commands to immediately disrupt the activity. Alerts are also sent to remote human supervisors. With AI intelligence backed by human oversight, CDDS helps make public and community spaces not just monitored—but safer.

**See how A-1 can help enhance public safety and peace of mind:**



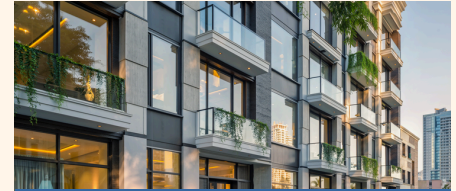
**Use Case: Outdoor Retail Centers**

Extend security coverage by monitoring key areas, identifying suspicious behavior, alerting human guards, and deterring theft, vandalism, and other safety risks.



**Use Case: Corporate Campuses**

Patrol corporate campus interiors and exteriors, using sensors and cameras to detect unwanted activity, issue warnings, and alert security.



**Use Case: Residential Communities**

Extend residential safety with constant, visible patrols to deter unsafe behavior and respond quickly to unusual activity.



**Use Case: Industrial Sites**

Increase visibility around loading docks, storage yards, and perimeter zones with mobile patrols and intelligent monitoring to deter unauthorized access and reduce security blind spots across industrial sites.



**Use Case: Healthcare Facilities**

Help healthcare facilities maintain a safer environment through continuous mobile patrols across campuses, parking areas, and critical access points.



**Use Case: Transportation Hubs**

Extend visibility and security awareness with autonomous patrols and integrated sensors to detect anomalies and deter unwanted activity.

Agape-1 Technology Inc. is led by industry experts from IBM Watson Lab and AT&T, leveraging decades of expertise in AI, enterprise technologies and robotics to advance perimeter security innovation.

Interested in learning more about the A-1 Security Robot? Email [info@agape-1.com](mailto:info@agape-1.com) or reach out to your account manager.



- Howard Ho, PhD – CEO, Co-founder – [howard@agape-1.com](mailto:howard@agape-1.com)
- Rosemary Wang, CPA – CFO – [rosemary@wangaccountancy.com](mailto:rosemary@wangaccountancy.com)
- Theodore Lee – COO, Co-founder – [theodore@agape-1.com](mailto:theodore@agape-1.com)



[Agape -1 Technology Inc.](http://www.agape-1.com) **Disclaimer:** This brochure is for informational purposes only and does not constitute an offer to sell or solicitation to buy securities of Agape-1 Technology Inc. Product features, specifications, and availability are subject to change without notice.